

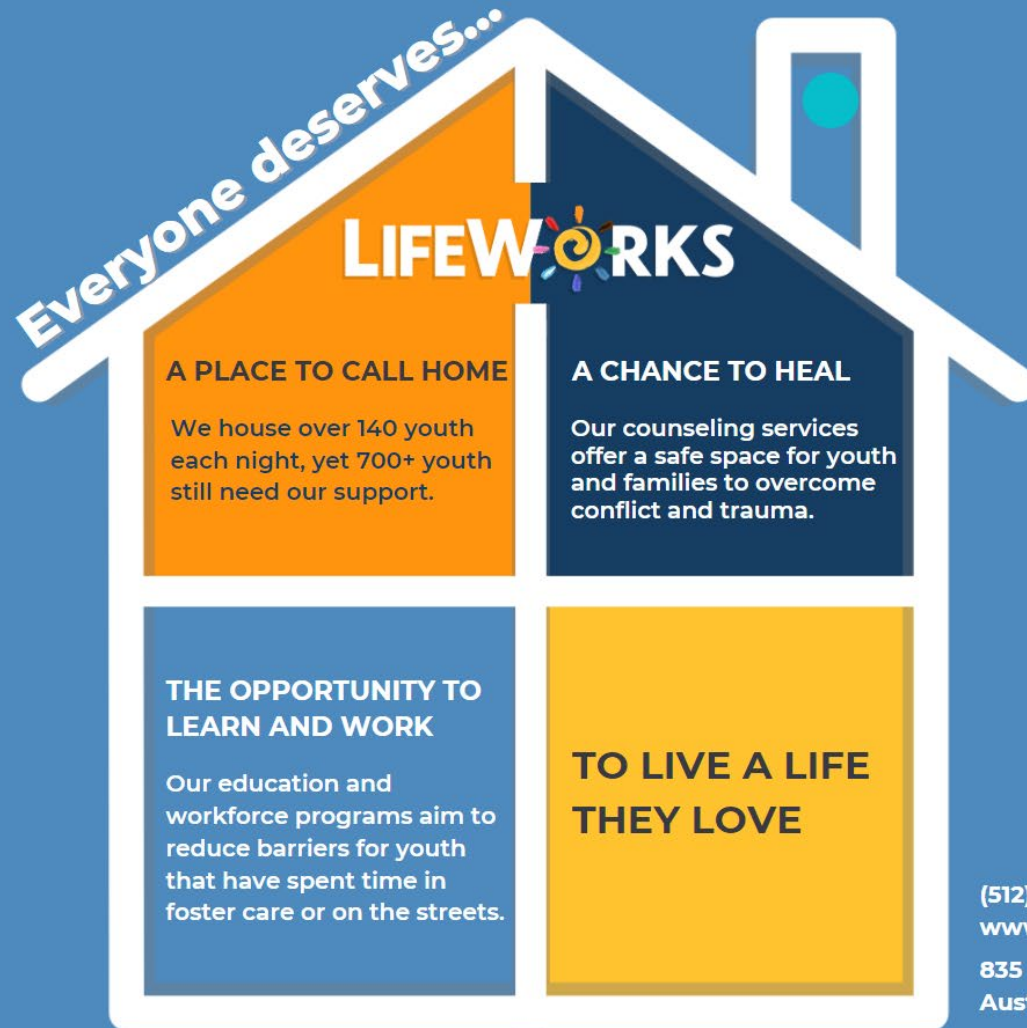
LIFEWORKS

The logo for LIFEWORKS features the word "LIFEWORKS" in a bold, sans-serif font. The letters "LIFE" are in a medium blue, while "WORKS" is in a darker blue. The letter "O" is replaced by a stylized yellow sun with a spiral center and several short, radiating lines representing rays.

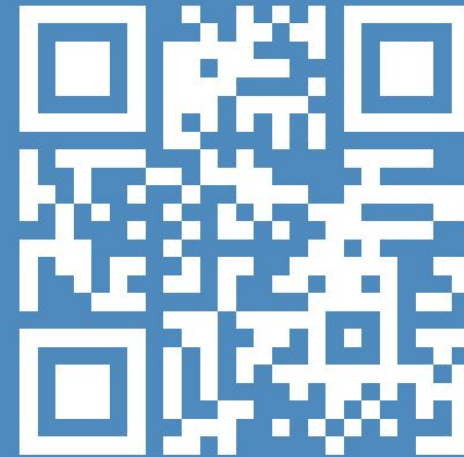
Solving Youth Homelessness

Our Mission

Solving youth homelessness through housing, mental health, education, and workforce services.



Need services or want to support/learn more?



(512) 735-2400
www.lifeworksaustin.org
835 N Pleasant Valley Rd,
Austin, Texas 78701



Housing

LifeWorks provides an array of housing interventions and programming that are designed to meet youth where they are at.

- **Street Outreach**
- **Youth Resource Center**
 - **Diversion**
- **Emergency Shelter**
- **After Care Transitional Services**
- **Transitional Living Program**
 - **Rapid Rehousing**
- **Permanent Supportive Housing**



Counseling

LifeWorks Counseling Division provides support for individuals and families who are struggling with issues such as family conflict, abuse, trauma, anxiety, depression, and the stress of everyday life.

- **Community-Based Counseling**
 - **Peer Support**
- **Shared Psychiatric Services**
- **Youth & Adult Counseling**
- **Resolution Counseling**



Education & Workforce

LifeWorks Education and Workforce Division is focused on developing the knowledge and skills needed to navigate the challenges of being a young adult, move toward independence, and break the cycle of poverty.

- **High School Equivalency**
- **Workforce Development**
- **Young Parents Program**
 - **Life Skills Training**

Emergency Shelter

LifeWorks Emergency Shelter program is a short-term housing program located in South Austin, serving youth in the foster care system, RHY (runaway homeless youth) and respite services for youth in the Travis County Transformation Project.

We create a safe space where youth & young adults can pursue a life they love, seek stability, and find acceptance. The program provides youth's basic needs, case management services, and activities that promote independent living skills.

Services:

Treatment planning

Case management- Youth centered service planning

Housing Navigation

Normalcy and Recreational Activities

Education support; school enrollment

Counseling and Peer Support

Basic Needs

Crisis Management



Emergency Shelter

Eligibility

- Youth in Foster Care; ages 14-18
- RHY (Runaway Homeless Youth); ages 14-17 in Travis County
- TCTP (Travis County Transformation Project); Referrals from Local Law Enforcement; ages 14-17

*Youth must be able to safely navigate within an open setting. The Shelter is a voluntary program. Program entry does require consent from a legal guardian.

RHY Referral Process

24/7 Phone: (512) 735-2200

Email: LWreferrals@lifeworksaustin.org



COMMON GROUND



Who Do We Serve?

Common Ground is a welcoming space for youth to hang out, recover, and find community. We support youth **ages 13-17** who are navigating difficult life challenges and would benefit from the support of others who have walked a similar path. We also support their families, offering resources and guidance to build a stronger path forward together. This is a free service.



About Us

At LifeWorks, our mission is to solve youth homelessness through housing, mental health, education, and workforce services.

We envision a Central Texas where every young person has a place to call home, a sense of belonging, and the support to pursue a life they love.



LifeWorksAustin.org



[@lifeworksaustin](https://www.instagram.com/lifeworksaustin)

LIFEWORKS



COMMON GROUND

A safe space where youth and families find support, common connections, and the tools to recover.

What We Offer

Peer Support for Youth

Connect with certified peers who offer emotional support, assist in navigating additional resources and services, explore wellness activities together, and help youth find a sense of community and belonging

Family Support Services

Caregivers get guidance from Certified Family Partners.

Fun Activities & Resources

Enjoy field trips, movies, video games, snacks, time to chill, and access to helpful resources.

Personalized Sessions

Group and one-on-one support for youth and families.



Let's Find Your **COMMON GROUND**

Mon-Thurs 1 PM to 7 PM
Friday 1 PM to 5 PM

No appointment necessary.
Walk-ins welcome.

Call our direct line at
512-735-2180
or email:

commongroundpeer@lifeworksaustin.org
for more information.

Visit Common Ground:
3700 South First Street
Austin, 78704

Right off the 10 Bus Route
in the LifeWorks building

How to Access Services

Walk-Ins Welcome

Stop by during our drop-in hours,
no appointment necessary.

Referrals Accepted

Whether from LifeWorks staff or
community partners, we'll guide
you every step of the way.

It's Totally Free.

There is no cost to attend
Common Ground. So stop by
and get connected today!



Youth Resource Center

The Youth Resource Center offers a safe space for homeless youth and young adults or those escaping DV. It provides access to social support, food, hygiene products, showers and community resources.

Located at 835 N. Pleasant Valley Rd.

(LifeWorks East Location)

Hours- 12pm-4pm Monday through Thursday

Street Outreach

The Street Outreach team provides community outreach every other day, visiting public parks, camps, libraries and other key spots identified in the area. They work closely with community partners and also provide inclement weather resources.

Eligibility for both:

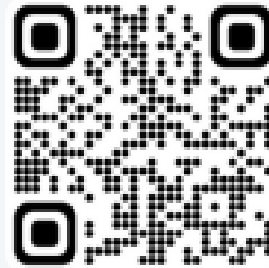
Young adults up to the age of 26 experiencing Homelessness or fleeing violence





Andrew.fike@lifeworksaustin.org

Chelsea.biggerstaff@lifeworksaustin.org



Contact Us At:

Call 512.735.2400

lifeworksaustin.org