



Integral Care



MCOT for CFS

December 2022





Program Goals

MCOT for CFS 2022



MCOT for CFS Program Goals:

- MCOT for CFS was developed to add additional capacity to serve children and their families in our community.
- This program focuses on expanding school, home, and community-based intervention services to:
 1. Prevent unnecessary inpatient hospitalization;
 2. Provide continuity of care and crisis support following an initial crisis response, especially for those families not previously connected to behavioral health supports; and
 3. Act as hospital liaisons to Dell Children's Emergency Department to coordinate with their personnel on determining an appropriate level of care, which can include:
 1. Private psychiatric hospital admission
 2. Placement to a State Mental Health Facility
 3. Discharge to the community with appropriate supports

The Right Care, at the Right Place, at the Right Time

- MCOT strives to provide the right care, at the right place, and at the right time while offering treatment in the least restrictive environment.
- The goal of the Intensive MCOT Services for Children and Families is to work collaboratively with the client and their family to help stabilize the crisis and bridge the client/family to on-going support/services in the community or through the agency.

Program Eligibility

Individuals needing a crisis response from Integral Care MCOT must reside in Austin/Travis County; otherwise, individual is transferred by Helpline personnel to the LMHA in their catchment area for continuity of care.

Individual must be ages 1-17 to be eligible for Intensive MCOT for children.

Child/Adolescent is believed to be experiencing a mental health crisis

MCOT services can include:

1. Crisis assessment and crisis intervention
2. Safety Planning
3. Family Support services
4. Site-based psychiatric screening and psychiatric crisis assessment
5. Up to ninety (90) days of Crisis Relapse Prevention Services
6. Crisis Counseling
7. Case Management
8. Medication Management
9. Psychosocial Rehabilitation
10. Rehabilitative Skills Training
11. Ensure linkage to ongoing behavioral healthcare at appropriate LOC (frequently in close collaboration with Integral Care's Systems of Care - Children's Services and appropriate community-based service providers)

Referrals

- Initial dispatches through Integral Care's Helpline (512) 472-HELP

Program Delivery

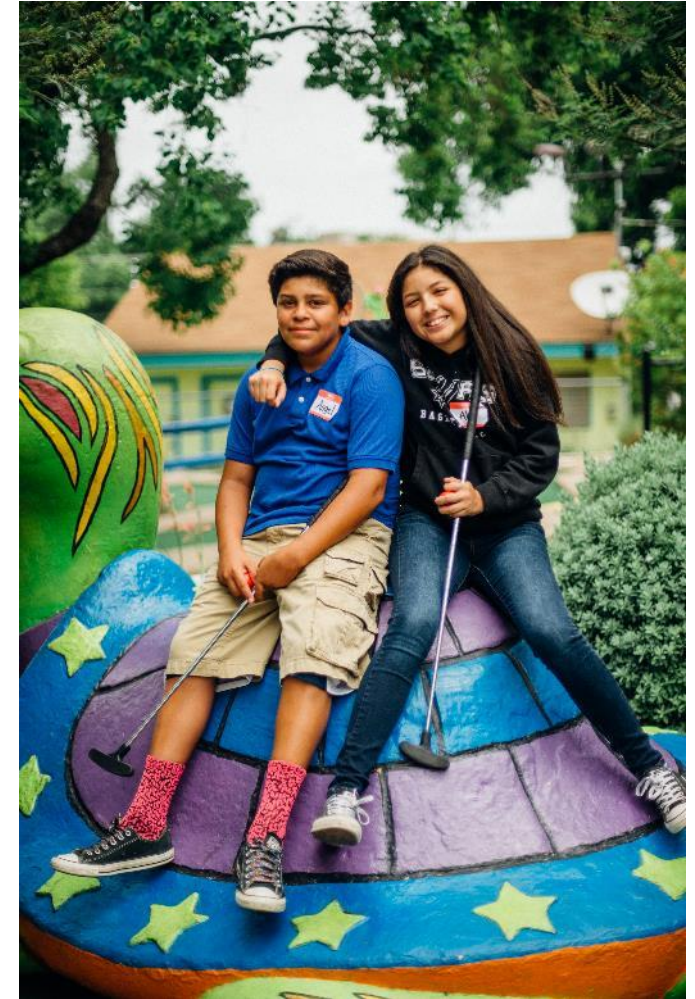
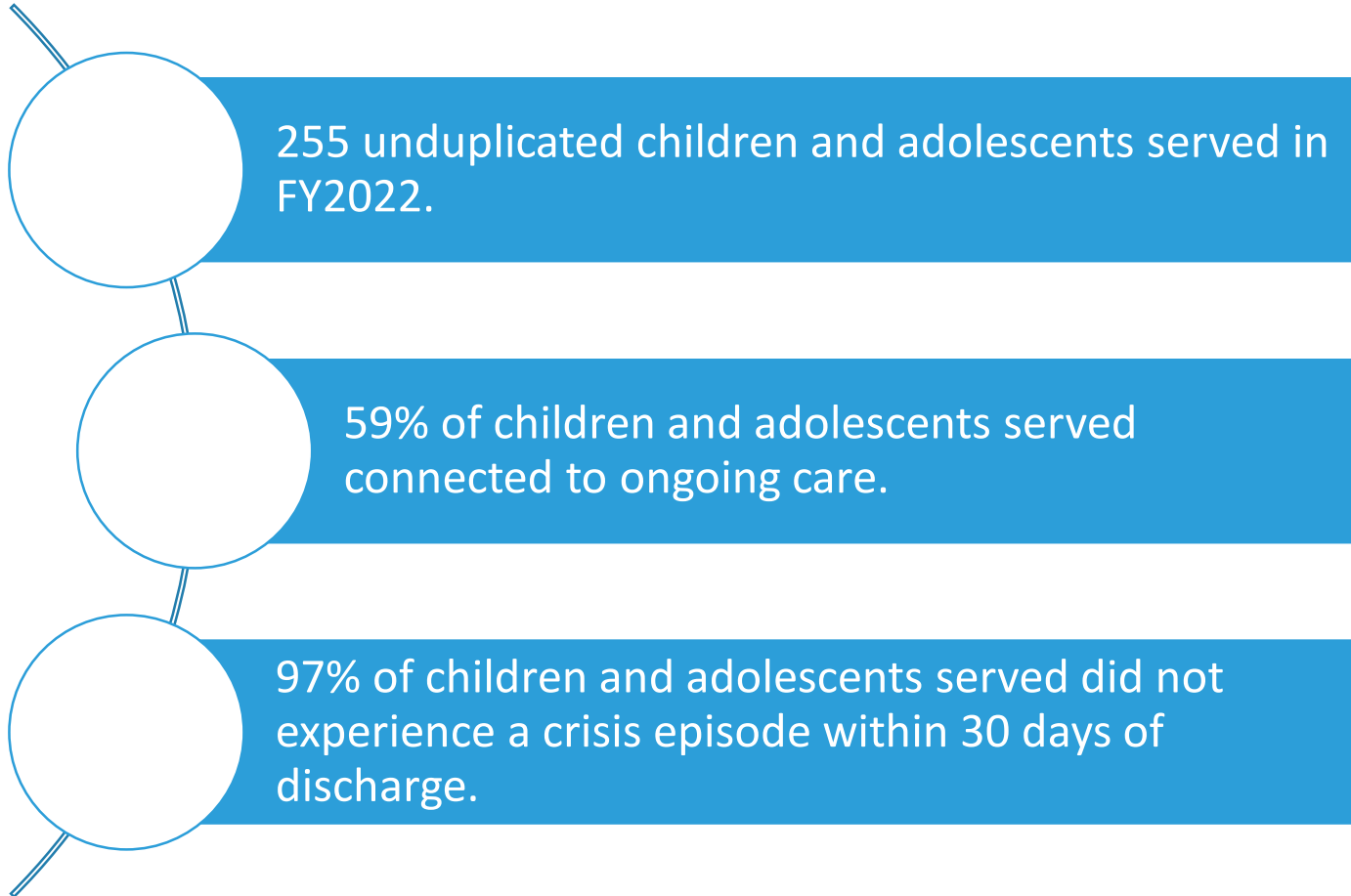
MCOT for CFS 2022



MCOT CFS Staff

- 1 LPHA Team Lead
- 4 QMHPs
- 1 Parent Partner

Program Performance



Questions & Answers