

Travis County Juvenile Probation Department

Programs and Services Overview

June 30, 2022



Content

- TCJPD Population Overview
- TCJPD Assessments, Treatment Phases, and Placements
- Research and Literature Review: What Works?
- Positive Youth Development Approach
- SOAR Reentry Program
- New Social Services Division
- Dept. of Justice Second Chance Act Reentry Grant
- New Programs and Services
 - Goodwill Workforce Development Program
 - Austin Free-Net Digital Skills Classes
 - Barista Training Program
 - Mentoring Partnerships
 - Life Works Life Skills Classes
- COPE and Special Needs Diversion Program (SNDP)

TCJPD Population Overview

Due to the **COVID-19 pandemic**, our total number of **referrals decreased by 35%** between FY19 and FY20

Our residential population increased slightly due in part to our participation in the **TJJD’s Regionalization Placement Program**. This program was enacted in 2016 to divert youth from state facilities to **regional facilities with smaller, more manageable therapeutic environments** closer to youths’ families and communities. **In FY20, 21 of the 93 youth** served in our residential facility were part of the **Regionalization Placement Program**.

REFERRALS	FY19	FY20
TOTAL	2,510	1,642
OFFENSE CATEGORY		
Felony	858	565
Class A or B Misdemeanor	1,210	787
Violation of Probation	193	106
Status Offense	22	13
CINS Other than Status	41	23
Other Violations	186	148
Unduplicated Total Referrals	1,557	1,048

DISPOSITIONS	FY19	FY20
TOTAL	2,618	1,692
Dismissed/Diverted	1,205	828
Deferred Prosecution	595	399
Probation at Home	249	146
Other	192	107
No Disposition/Transferred	153	78
Consolidated	128	70
Probation Placements	89	58
TJJD (State) Commitments	7	6

RESIDENTIAL (ISC)	FY19	FY20
TOTAL SERVED	77	93
Total Starting Placement	47	55
Average Daily Population	29	41
Males	27	34
Females	2	7
Average Length of Stay	271 days	239 days
Males	308 days	249 days
Females	55 days	197 days
Peak Population	40	49

FY20

- Dismissed/Diverted: 49%
- Deferred Prosecution: 24%
- Transferred/Other: 15%
- Probation Placements: .03%
- TJJD (State): .004%

RACE/ETHNICITY	FY20	AGE	FY20
TOTAL SERVED	93	TOTAL SERVED	93
Asian	1	13	4
African American	31	14	7
Hispanic	49	15	29
Caucasian	9	16	40
Other	3	17+	13

TCJPD Assessments, Treatment Phases, and Placements

Assess Actuarial Risk/Needs

- TCJPD utilizes the Positive Achievement Change Tool (PACT) to identify the overall risk to reoffend as well as specific criminogenic needs which warrant intervention.

Intermediate Sanctions Center (ISC) Treatment Phases

- Residential Phase (Phases I – III): 7 – 9 months
- SOAR Community-based Phase (Phase IV): 4 – 6 months

External Placement

- Specialized treatment facilities to address a youth's unique risk factors and needs (e.g., substance use, mental health needs, minor sex trafficking victimization, and sexual offender behaviors)
- Length of stay: average 6 – 12 months

SCREENINGS AND ASSESSMENTS	FY19	FY20
Risk and Needs Assessments Completed	4,263	2,822
MAYSI Screenings Completed	2,565	1,661
GAINSS Screenings	1,754	1,118
Follow-up Assessments	174	75
Mental Health Assessments Completed by Assessment Services	248	156
Substance Use Assessments Completed	442	262
Psychological Reports Completed by Contracted Service Providers	73	0
Psychological Reports Completed by Assessment Services	31	29
Fitness to Proceed Evaluation	0	4
Adult Certification Evaluation	1	1
Psychiatric Evaluations Completed	139	79
Psychosocial Assessments	49	68

ACTIVE EXTERNAL PLACEMENT CONTRACTS	CITY	COUNTY	STATE
Krier Residential Treatment Center	San Antonio	Bexar	TX
Devereux Advanced Behavioral Health	League City	Galveston	TX
New Life Residential Treatment Center	Canyon Lake	Comal	TX
Pegasus Sexualized Behavior Treatment Program	Lockhart	Caldwell	TX
San Marcos Treatment Center	San Marcos	Hays	TX
Settlement Home Residential Treatment Center	Austin	Travis	TX
Rite of Passage Specialized RTC	Brownwood	Brown	TX
Rite of Passage Specialized RTC	Lake Granbury	Hood	TX
The Refuge (DMST RTC)	Bastrop	Bastrop	TX
Gulf Coast Trades Center	New Waverly	Walker	TX
Krause Children's Center	Katy	Harris	TX
Meridell Achievement Center	Liberty Hill	Williamson	TX
New Horizons Residential Treatment Center	Goldthwaite	Mills	TX
Therapeutic Family Life - CPA / Foster Homes	Various	Various	TX

COPE and SNDP

Collaborative Opportunities for Positive Experiences (COPE)

- Non-adjudicated youth
- MHA or Psychological required for staffing
- Monday staffing days

Special Needs Diversion Program (SNDP)

- Both adjudicated & non-adjudicated youth
- Packet required to staff for program
- Wednesday staffing days

Research and Literature Review: What Works?

Practice

Assessments

Reentry
Planning



Case
Management

Program Evaluation
Quality
Improvement

Youth Outcomes

Family &
Social
Support

Education &
Employment



Health &
Wellbeing

Community
Connections



Youth are Not Mini-Adults

Adolescent Development

Adolescence is a transient period of development between childhood and adulthood characterized by experimentation and risk-taking, a tendency to discount long-term consequences, and a heightened sensitivity to peers and other social influences.

Important research findings for juvenile justice domain

1. Adolescents are **less able to regulate their behavior** in emotionally charged contexts.
2. Adolescents are **more sensitive to external influences** such as the presence of peers **and the immediacy of rewards**.
3. Adolescents are **less able to make informed decisions** that require consideration of the long term.

What is SOAR?

Youth reentering the community from a placement face a variety of challenges as they reintegrate into their schools, families, and home communities. That's where **Strengthening Opportunities for Achieving Reentry (SOAR)** steps in for support.

SOAR believes **strengthening family and community connections is the key to a safe and successful transition**. Through **positive youth development, motivational tools, and a strength-based approach** youth are engaged within their communities, schools, peer groups, and families in a manner that is constructive and productive. SOAR recognizes, utilizes, and **enhances strengths and promotes self accountability**.





Strength-based Lens

SOAR views juveniles through a strength-based lens that emphasizes building skills and asset development rather than focusing on deficits.

HOW DOES SOAR WORK?

Continuum of Care

SOAR Support Teams provide each youth with comprehensive reentry services – such as school, employment, and housing assistance; mental health services; family programming; and mentoring – to address barriers and empower youth to live up to their full potential. Support Teams include a JPO, Counselor, Care Coordinator, and Family Partner.

Motivational Tools

As positive reinforcement for good behavior, SOAR uses incentives, an evidence-based tool to motivate and support positive behavior changes in adolescents. As youth progress through reentry, they earn points that unlock incentives of increasing value that are incrementally aligned with minor, moderate, and significant accomplishments.

Strength-based Court

SOAR Court is a reentry court held in a formal setting to instill a sense of importance and continuity for youth engagement, treatment, and reentry success. During hearings, the Court reviews progress, provides encouragement, approves incentives as earned, and assigns interventions as needed.

SOAR SUPPORT TEAM

- Assigned within 30 days of admission to ISC
- Case management
- Helps youth set and accomplish goals, connect with community resources, and prepare for upcoming hearings

Care Coordinator



Family Partner



- Can be assigned at any time during SOAR Phases I – IV (voluntary)
- Family advocate
- Prepares family for youth's return home; identifies and strengthens community supports
- Provides DBT curriculum-based parenting skills and groups

Youth

- Assigned upon admission to ISC
- Ensures understanding of compliance and maintains engagement through meaningful contacts
- Responsible for PACT assessments and reassessments
- Updates individualized case plan and makes referrals for services

Juvenile Probation Officer



Counselor

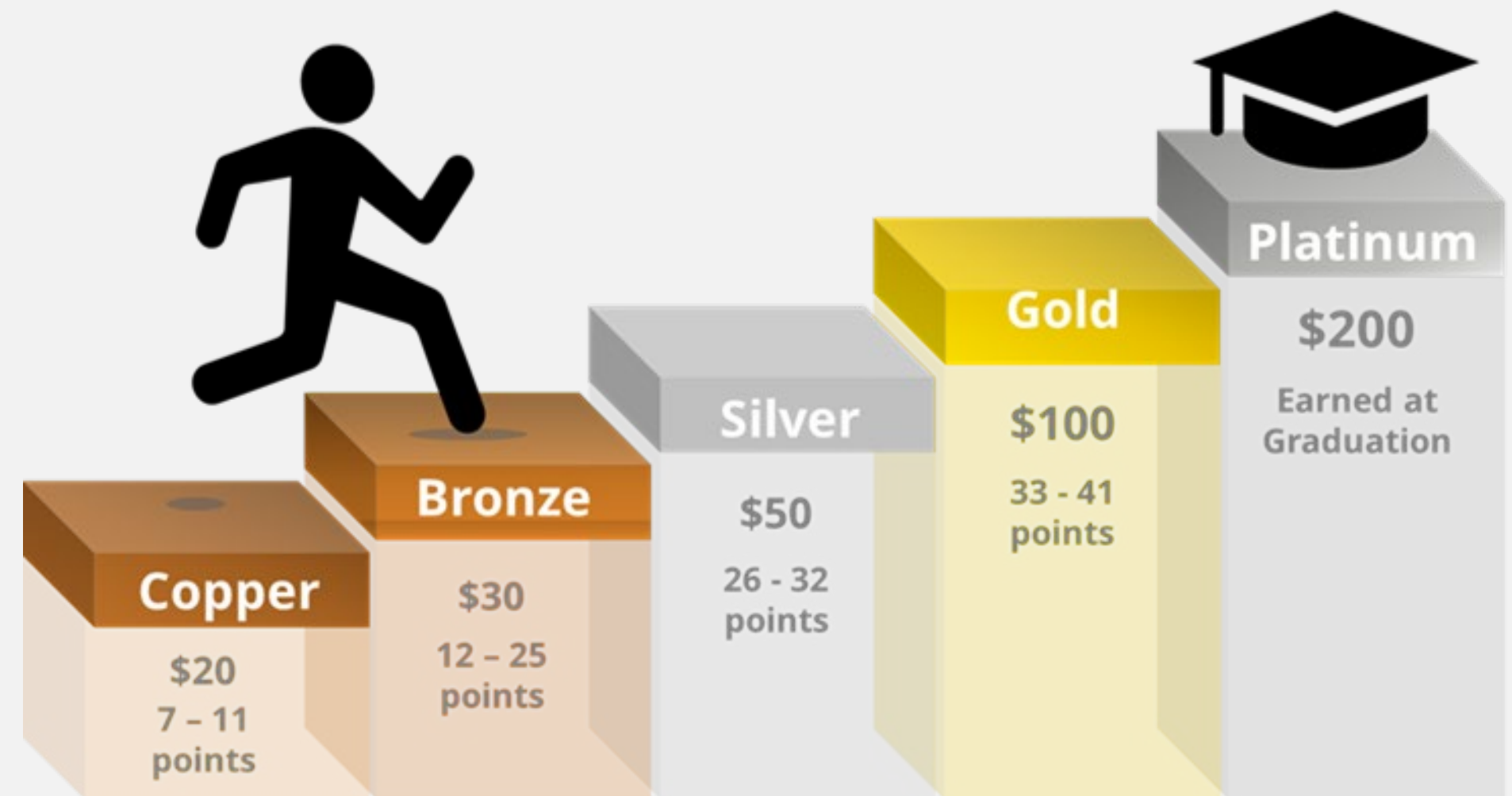


- Assigned upon admission to ISC
- Assessment and treatment services
- TCJPD staff clinicians include licensed psychologists, doctoral interns, post-doctoral fellows, LPCs, LMFTs, LMSWs, LCSWs, LSOTPs, and LCDCs

SOAR Motivational Tools

Formal Incentives Structure

SOAR is based on the science of adolescent development. It recognizes that adolescent brains are more responsive to reward than the threat of punishment and that positive reinforcement plays an important role in shaping positive adolescent behavior. Rooted in social learning theory, incentives are an important component of behavioral management systems because they help youth learn and implement new, desired behaviors.



Social Services Division Overview

Created in the Fall of 2021

SOAR Reentry Court

- Strength-based Court
- Positive Youth Development Approach
- Continuum of Care
- Motivational Tools (incentives)

Family and Youth Coordination

- Care Coordinators
- Family Partners

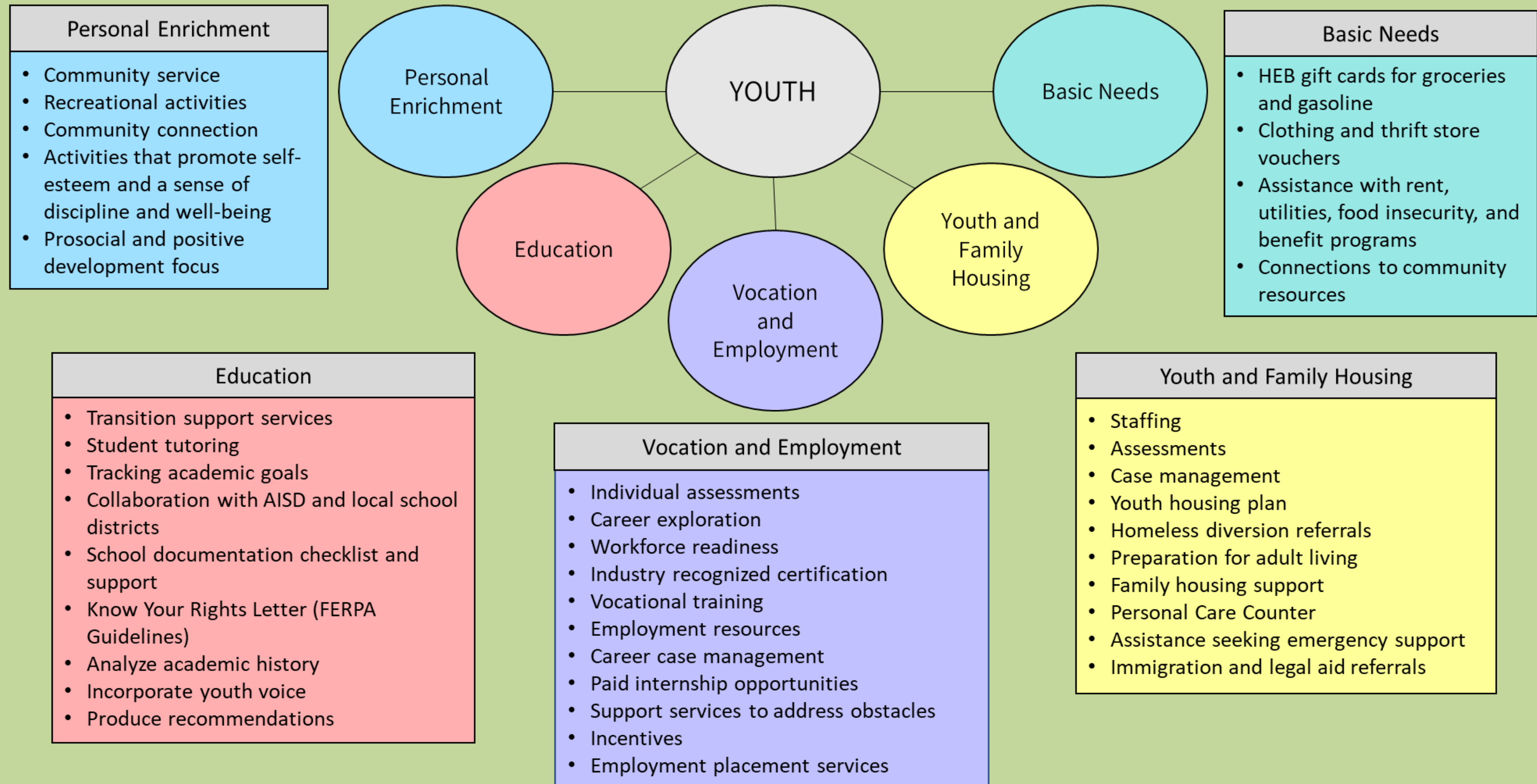
Community Engagement and Resource Development

- Community Connections
- Partnerships
- Identify Community Resources

Resource Coordination

- Housing
- Education
- Personal Enrichment
- Basic Needs

Social Services Resource Coordination



Second Chance Act – Youth Reentry Program

2021 Awards Summary

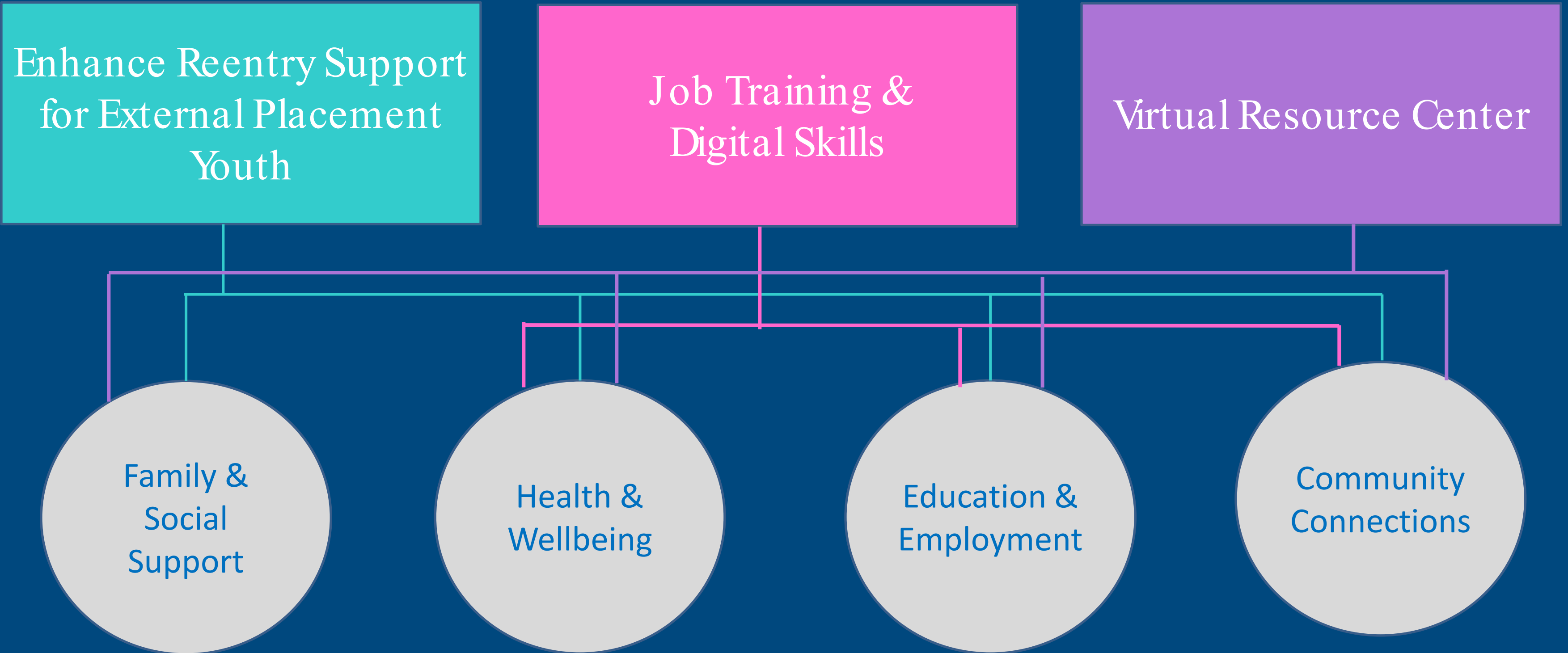


Amount: \$766,944

Duration: 36 months

Project Period: October 1, 2021 – September 30, 2024

Grant Focus Areas



Enhance Reentry Support for External Placement Youth

Goal

Mirror elements of SOAR to enhance reentry services for non-ISC youth through a specialized docket, reentry support team, and motivational tools.

JPO

Counselor

Care
Coordinator

Family
Partner

1. Care Coordinator (1 FTE)
2. Family Partner (Contract)
3. Incentives for external placement youth and families

Job Training and Digital Skills

Goal

Empower youth to fully participate in the digital society and increase their employability through digital skills training and workforce development.

1. Austin Free-Net Digital Skills Classes
2. Barista Training Program (aka Casa Café)
3. Social Services Program Specialist
 - Supports Employment Coordinator who will oversee workforce development (e.g., Goodwill contract)
 - Residential/ISC

Virtual Resource Center (VRC)

Goal

Online hub to connect youth, families, and TCJPD staff with community resources (e.g., food pantries, health clinics, job postings, community service opportunities, etc.)

1. Virtual Resource Center Website
2. Aunt Bertha (www.findhelp.org)
 - Search for community service providers, track referrals, run reports, etc.
 - English and Spanish

New Contracts and Programs



Workforce Development Program
Stage 1: ISC
Stage 2: Community



CATALYST COLLECTIVE

Mentoring Services



Life Skills Classes



Digital Skills classes
Incentives (devices + hotspot)
Free refurbished laptops



Barista Training Program
Community Youth

Q & A

Questions?

Thank You!

Teresa Williams
Social Services Program Administrator
Social Services Division (TCJPD)
Teresa.Williams@traviscountytexas.gov
(512) 854-5628

Courtney Baldwin
CRCG Program Coordinator
Social Services Division (TCJPD)
Courtney.baldwin@traviscountytexas.gov
512-413-2327 work cell