



THE CHILDREN'S PARTNERSHIP SYSTEM OF CARE PROGRAM

Presented by:

Sonia Hartman

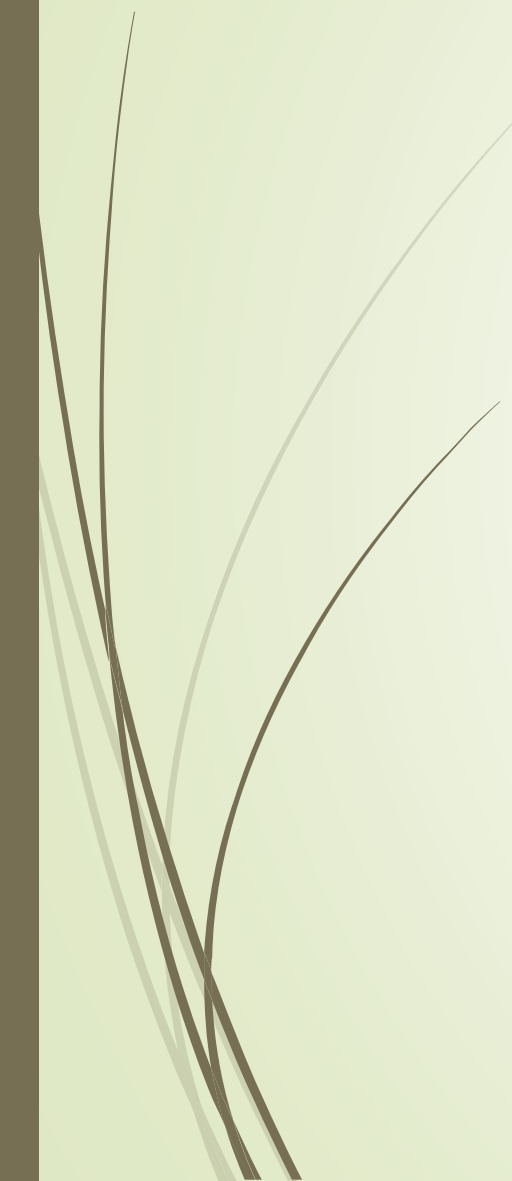
Social Services Program Administrator

TCHHS and The Children's Partnership

Sonia.Hartman@traviscountytx.gov



What is Wraparound?

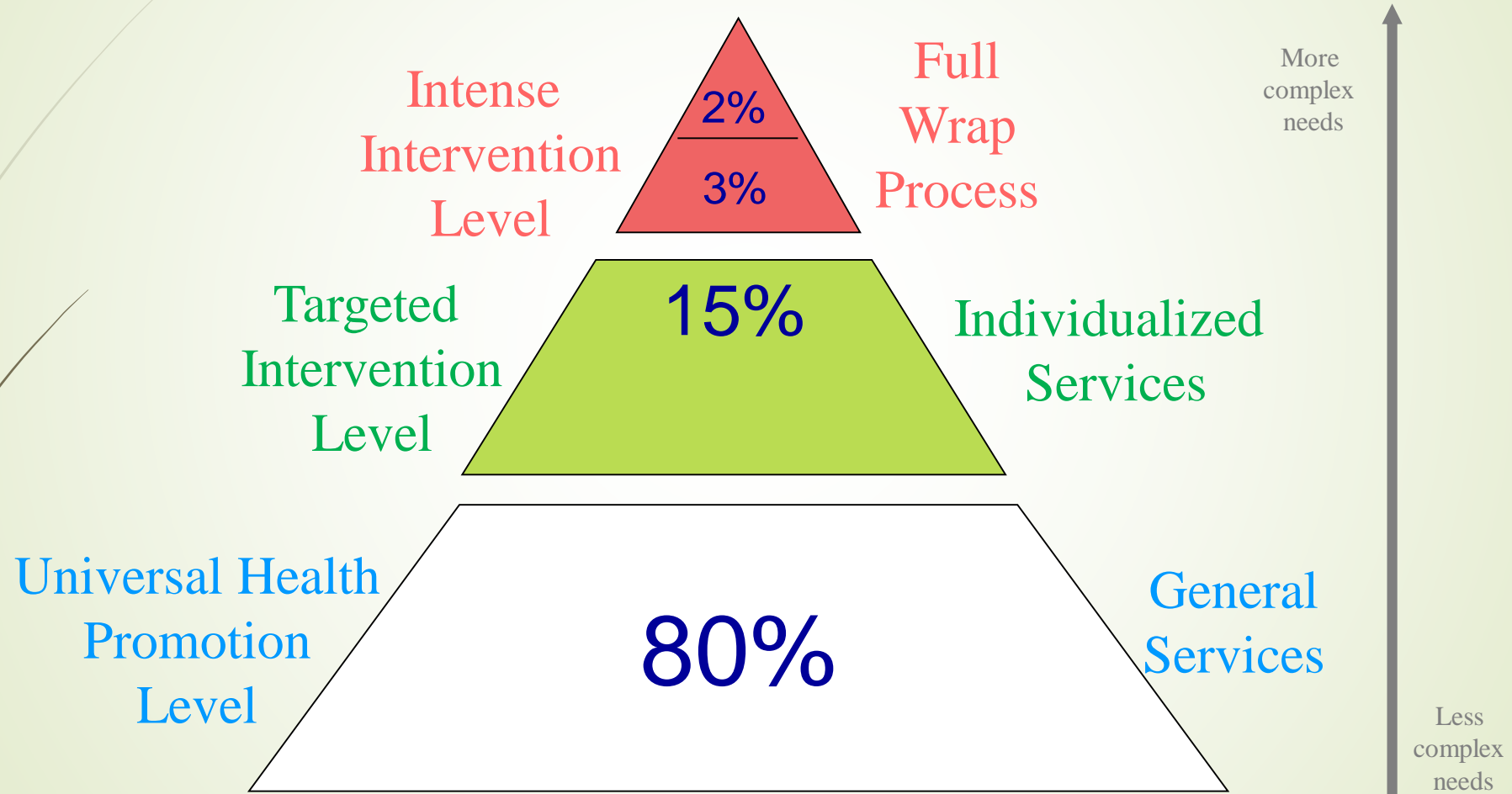


Wraparound is an ecologically based process and approach to care planning that builds on the collective action of a committed group of family, friends, community, professional, and cross-system supports mobilizing resources and talents from a variety of sources resulting in the creation of a plan of care that is the best fit between the family vision and story, team mission, strengths, needs, and strategies.

A System of Care is:

- A spectrum of effective, community based services & supports for children and youth with or at risk for mental health or other challenges & their families
- Organized into a coordinated network
- Builds meaningful partnerships with families & youth
- Addresses their cultural & linguistic needs
- Helps children and youth function better at home, school, community, and throughout life

System of Care





Travis County CRCG



Travis County's CRCG is Community Partners for Children.


CPC is a community partnership of approximately 20 public and private community service organizations in Travis County.

This partnership creates a single-point of community collaboration for families of children with complex needs and is the entry point for many of Travis County's System of Care programs. CPC is the integration of three community resource meetings:

- Travis County's CRCG
- TRIAD (Partnership of Austin Travis Co. Integral Care, TCJPD, TCDFPS, & TCHHS)
- The Children's Partnership Eligibility and Review Team



Who CPC Serves

- Children and Youth of Travis County
 - Children and Youth between the ages of 0-22 years of age
 - Children and Youth with multiple system involvement
 - Children and Youth whose Physical Challenges, Mental Health Challenges and/or Developmental Disabilities significantly impact their ability to function
- 



Who Can Refer to CPC

Anyone who is concerned about a child with complex needs

- Parents/Guardians
- Community Agency Staff
- Schools
- Faith-Based Community
- Counselors



**For more information regarding CPC and Travis
County's System of Care, please contact:**

Susie Kirk, CPC Community Liaison

512-854-4868; susie.kirk@traviscountytexas.gov

Sonia Hartman, CPC Chair & Travis Co. SOC Manager

512-854-5022; Sonia.hartman@traviscountytexas.gov

**For assistance collaborating with Travis Co Juvenile
Probation, please contact the Travis Co. CRCG
Coordinator:**

Courtney Baldwin

512-854-5619; courtney.Baldwin@traviscountytexas.gov

The Children's Partnership

**A family driven
community-based
collaborative which
implements the
wraparound
approach to support
families in meeting the
needs of their children**





THE CHILDREN'S PARTNERSHIP

- **MISSION:** TCP unites resources to help ensure that children with social, emotional or behavioral needs can live successfully with their families in the community.
- **VISION:** TCP will create a new bond between families and the community at large to better provide for the social, emotional, and behavioral needs of our children.
- **VALUES:** TCP values diversity and spirituality, and embraces a family centered, strengths driven, culturally competent, community based program of care.
- **SYSTEM OF CARE** value system engrained
- **WRAP AROUND** process for working with families




Criteria for The Children's Partnership

- Primary Mental Health Diagnosis
(or MH Diagnosis and enrolled to Integral Care IDD Services)
- Multi system involvement
- Ages 5-17 (unless enrolled in TCP partner school)
- Eligible for services through a TCP partner agency providing care coordination



THE CHILDREN'S PARTNERSHIP PARTNERS

- **Travis County Health and Human Services**
 - **Travis County Juvenile Probation Department**
 - **Integral Care- CFS**
 - **Integral Care-IDD**
 - **Region VII Department of Family and Protective Services**
 - **Austin Independent School District**
 - **Pflugerville Independent School District**
 - **Del Valle Independent School District**
 - **Travis County CRCG**
- 

The Children's Partnership serves families using the Wraparound process facilitated by Care Coordinators

- **Current TCP Partners with Care Coordinators**

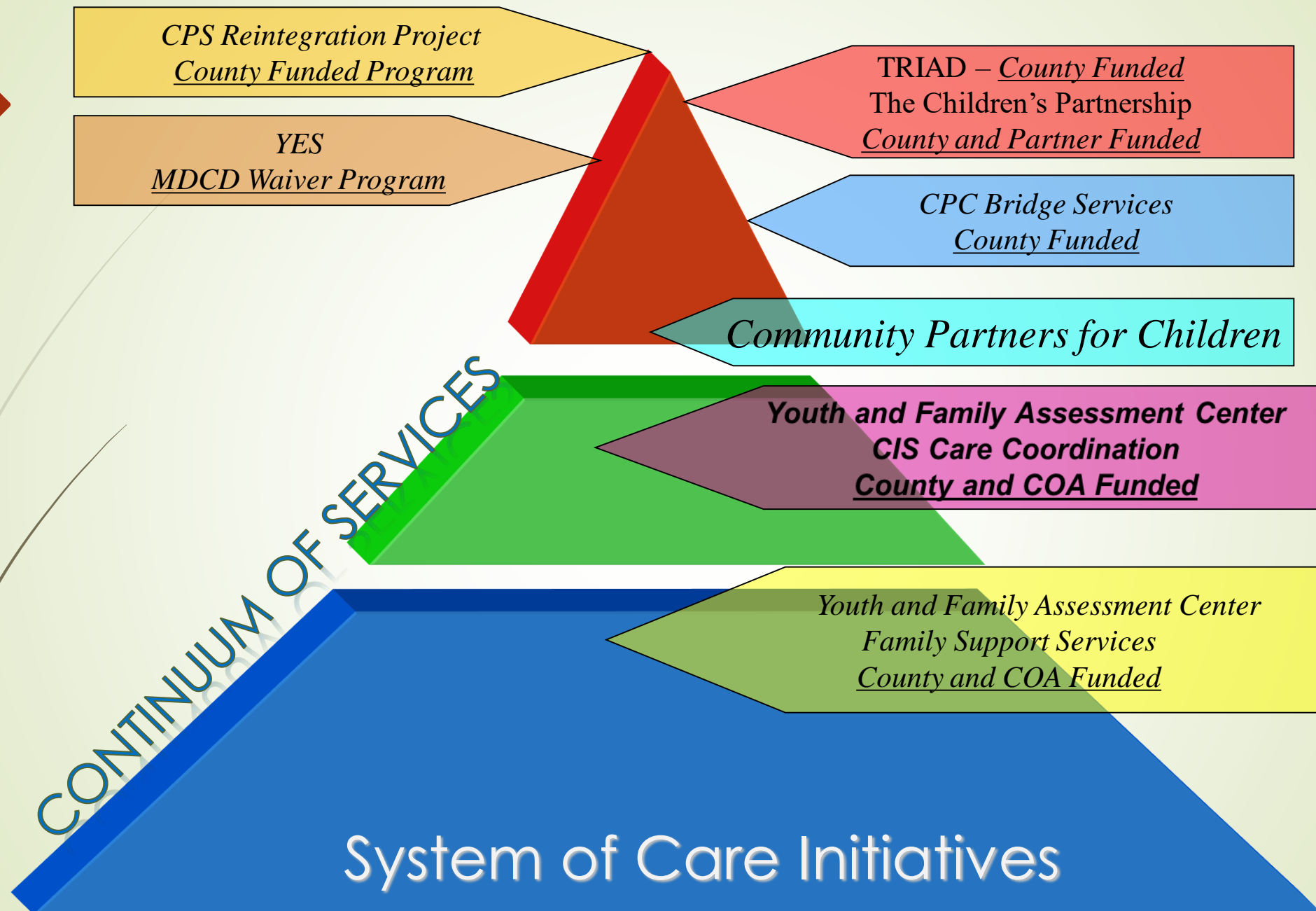
- Austin ISD
- Del Valle ISD
- Pflugerville ISD
- Integral Care Child & Family Services
- Integral Care Intellectual & Developmental Disability Services
- Travis County Health and Human Services
- Travis County Juvenile Probation Department

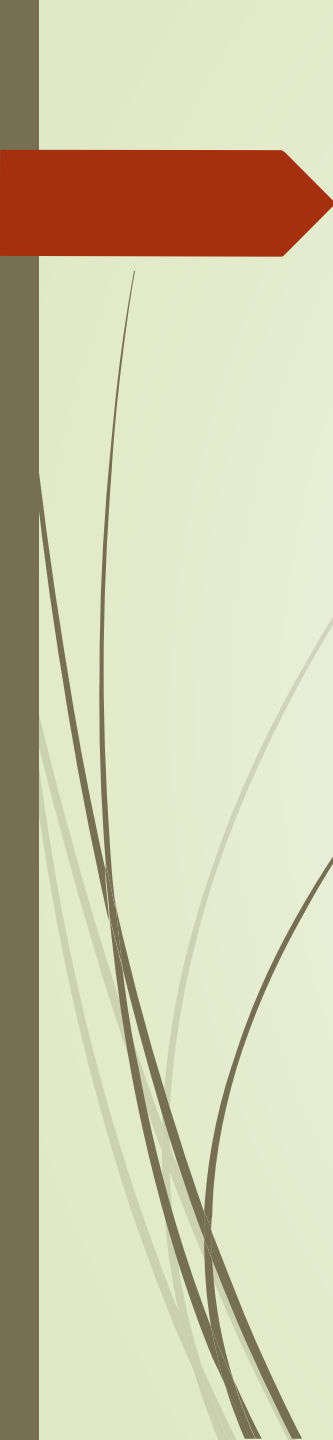




Care Coordinators and Parent Liaison's

- Care Coordinator's coordinate, communicate and collaborate with the family, referring entity, community providers and resources.
- CC facilitate the wraparound process and the development of the Plan of Care.
- CC are responsible maintaining an open line of communication, to decrease duplication of services, engagement, and fidelity to the Wraparound Model.
- Parent Liaison's have lived experience with either their own children, family members or themselves in navigating various child and adult serving entities.
- Parent Liaisons provide education, advocacy, peer to peer support and linkage to community-based services.
- PL's ensure the parent/youth/young adult voice is heard and present in all settings-Nothing about them without them.





Sonia Hartman(She, Her, Hers)
Social Services Program Administrator
System of Care Manager/The Children's Partnership
Office of Children Services
Travis County Health and Human Services
5325 Airport Blvd
Austin, Texas 78751
512-854-5022 (office)
737-931-7833(cell)
sonia.hartman@traviscountytexas.gov

Christinia Dorneden Kuehn(She/Her/Hers)
Social Services Program Administrator
Quality Assurance Coordinator, The Children's
Partnership
5325 Airport Blvd., Office 2061
Austin, TX 78751
(512) 854-3724
Cell: 737 228-5750
Christinia.kuehn@traviscountytexas.gov

QUESTIONS

